



# EMAS, a premium environmental management tool for organisations

## Benefits & registration process



## EMAS in 7 questions...

1. What is EMAS?
2. What are the benefits of EMAS registration?
3. Who can participate?
4. How to be EMAS-registered?
5. What are the costs?
6. How is performance assessed?
7. How is EMAS different from other tools?
8. EMAS' premium services
9. Statistics about EMAS

# What is EMAS?

It is a voluntary environmental management instrument designed by the European Union



## Aim

Continuous improvement in the environmental performance of companies and other organisations

## Means

Management system enabling organisations to evaluate, improve, measure and report on their environmental performance

## Outcomes

Lower environmental impact, better efficiency and credible information on these issues

# What is EMAS?

## 3 core elements

### **Performance**

Actions implemented by the organisation improve environmental performance and legal compliance, in line with policy targets.

### **Transparency**

These achievements are made public through the annual environmental statement.

### **Credibility**

The environmental statement is verified by independent environmental verifiers who guarantee the value of the information disclosed.

## What are the benefits of EMAS registration ?

1

**Improved environmental performance:** 70% of registered organisations show improvement on nearly ALL environmental indicators\*

2

**Improved legislative compliance** and hence less risk of sanctions

3

**Better identification of overall corporate responsibilities:** Better-defined roles and responsibilities, stronger awareness of teams

4

**Fewer environmental accidents**

5

**Cost savings:** Achieved through reuse, recycling, and decrease in resource use

6

**Improved relations with stakeholders:** Employees are more committed and external stakeholders value the transparency of the organisation

7

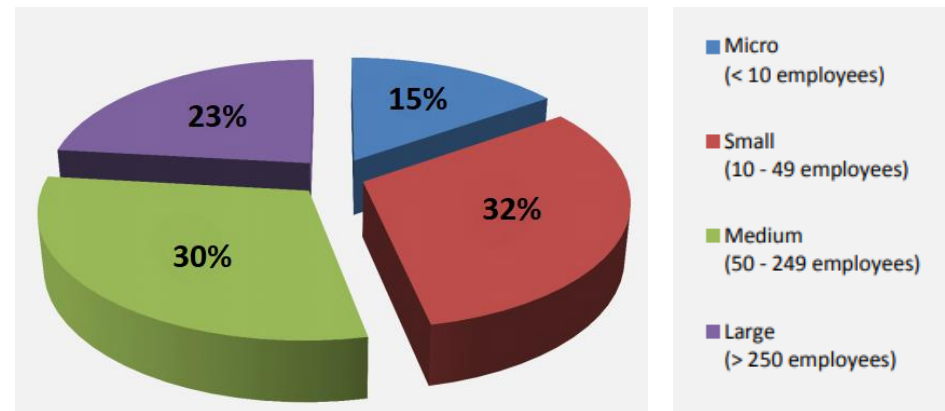
**Regulatory relief:** In some Member States, authorities provide advantages to EMAS-registered organisations, such as reductions in inspections or taxes

## Who can participate?

I

Organisations operating in all economic spheres (including local authorities, NGOs, etc.), of any size, including multiple sites

Size of EMAS-registered  
organisations – Oct. 2017  
EMAS Helpdesk



II

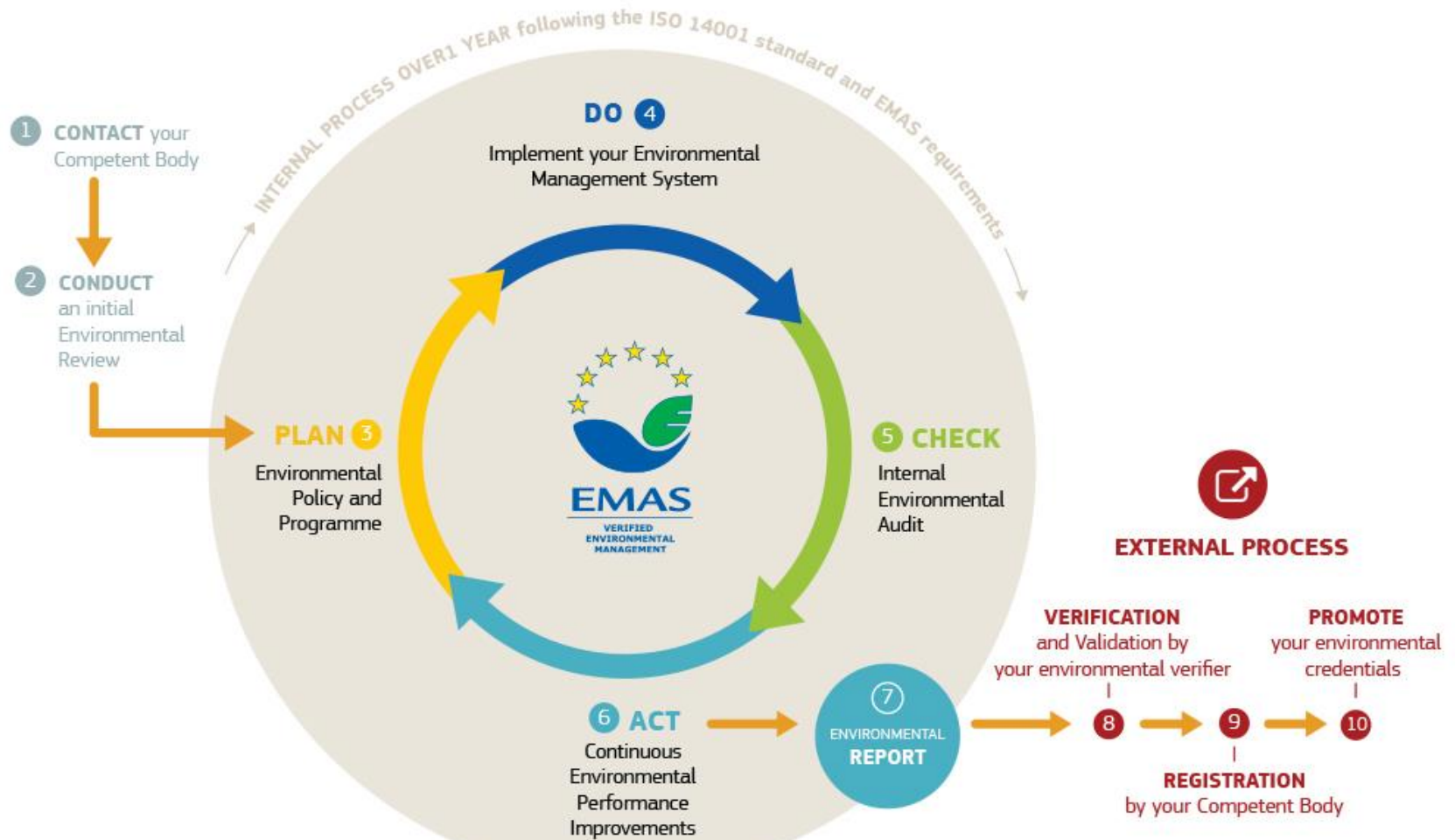
Organisations with sites worldwide\*

\* EU Member States may permit registration of organisations located outside the EU, EEA and Accession Countries. Please visit [www.emas.eu](http://www.emas.eu) for further information.



European  
Commission

# How to be EMAS-registered



# How to be EMAS-registered

1

- Contact your local [Competent Body](#) to get customised technical support (e.g. a list of qualified EMAS consultants) and information about funding opportunities.

2

- Carry out an initial environmental review to identify your direct and indirect environmental impacts, your current performance, and the legal requirements. This initial assessment sets the benchmark to measure your future success in reducing environmental impacts.

3

- As the first structuring phase of your Environmental Management System (EMS), your leadership (top management) will step up to define an environmental policy and environmental programme that are consistent with your organisation's strategy.



# How to be EMAS-registered

4

- Implement your EMS by adapting your structure and processes to achieve your environmental policy and objectives.

5

- Check the effectiveness of your EMS: follow appropriate indicators, including EMAS core indicators, and conduct an internal environmental audit.

6

- Your top management will review the EMS to ensure its capacity to meet the goals set forth in the environmental policy and programme, and will decide on the next steps to foster continual improvement.

## How to be EMAS-registered

7

- Prepare your environmental statement to effectively communicate your environmental performance to stakeholders.

8

- Have an accredited or licensed independent environmental verifier validate your environmental statement and verify your EMS.

9

- Submit your registration to the Competent Body.



**EMAS**  
VERIFIED  
ENVIRONMENTAL  
MANAGEMENT  
REG. NO.

Celebrate EMAS and use it to  
show your environmental  
commitment !

# New !



## Registration for multi-site organisations – including outside EU borders

Organisation with multiple sites can now register more easily.

1 ORGANISATION

BEFORE

**1 audit per site** (over the 3-year audit cycle)  
⇒ Time-consuming and costly for large organisations, but very extensive



NOW

**1 audit of the headquarters +  $v_n$  audits** (sample of sites)  
⇒ Sampling methodology ensuring reliability of the scheme  
⇒ Time and resource savings for large organisations  
⇒ Organisations can register more sites and maximise the benefits of EMAS

- ✓ Shared corporate policy
- ✓ Mutualised costs

The procedure is described in the EMAS [user's guide](#).

## What are the costs of EMAS registration?

Costs vary with the size and the sector of the organisation. They include:

- A Fixed costs** Assumed to be unrelated to staff numbers (e.g. registration fees, IT support-related costs)
- B Internal costs** Incurred by organisation staff to implement, administer and report on EMAS (e.g. environmental coordinator, internal audit team, etc.)
- C External costs** Incurred by employing external consultancy to support EMAS implementation, for example (e.g. employee training), and for verifiers

Some Member States have introduced financial incentives for EMAS-registered organisations, for example reduced administrative fees related to permits. A reported 30% of organisations who benefit from this incentive enjoy annual savings in the range of **€40,000 to €50,000\***.

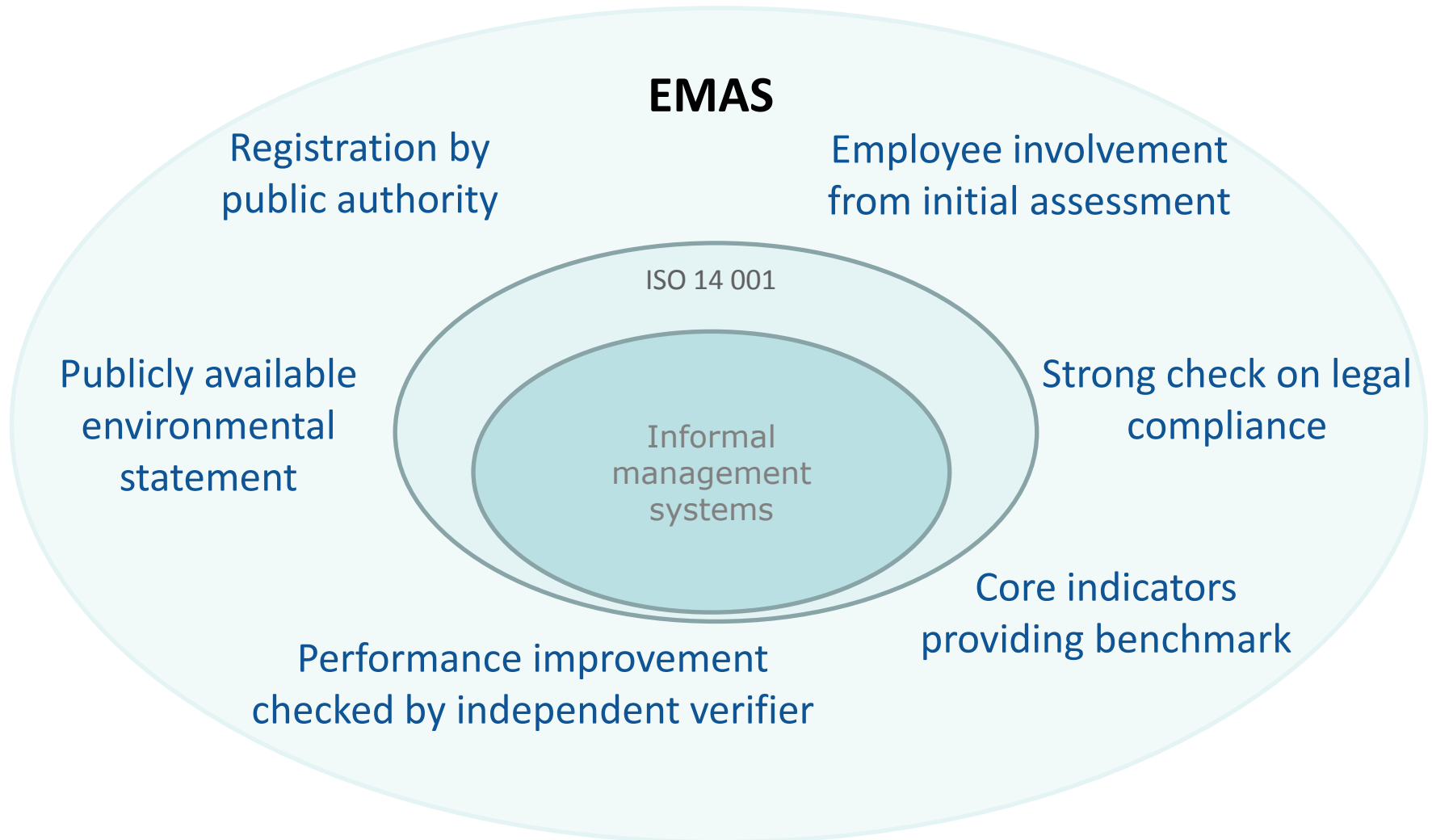
⇒ For detailed information about the costs of EMAS implementation and financial incentives, please contact your national [Competent Body](#).

## How is performance assessed?

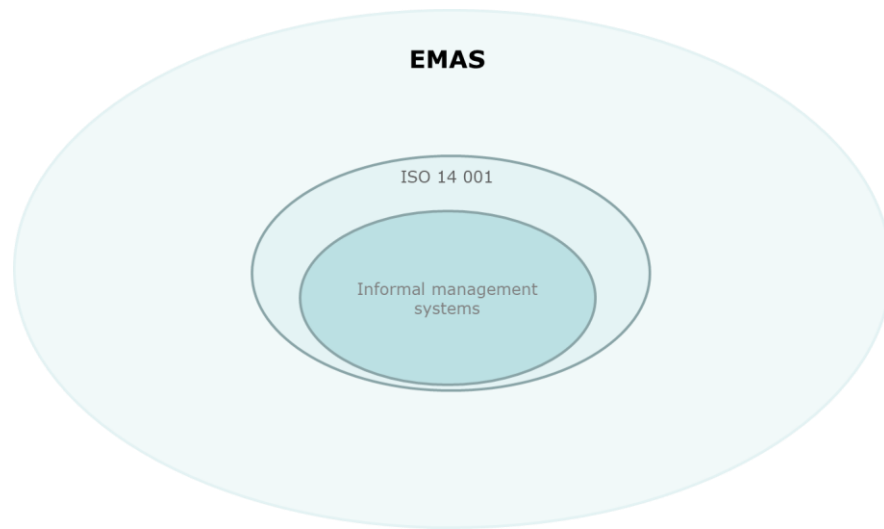
Six core indicators that reflect direct environmental aspects are assessed over time. They are included in the environmental statement and calculated per output.

Key area	Input/impact	Output/activity
<b>Energy efficiency</b>	Direct energy use Renewable energy use	<u>Production sector:</u> Annual gross value added or annual physical output  <u>Services or public sector:</u> Number of employees
<b>Material efficiency</b>	Mass flow of different materials used (excluding energy carriers and water)	
<b>Water</b>	Annual water consumption	
<b>Waste</b>	Annual generation of waste Annual generation of hazardous waste	
<b>Biodiversity</b>	Land use ( <i>built-up area</i> )	
<b>Emissions</b>	Annual emissions of greenhouse gases (CO <sub>2</sub> eq.) Annual air emissions	

# How is it different from other tools?



# How is it different from other tools?



- Over 70% of environmental verifiers perceive EMAS to be more effective than ISO 14001 in ensuring legal compliance.
- 72% of verifiers consider EMAS more effective than ISO 14001 in ensuring the **transparency, trustworthiness** and **completeness** of environmental reports and documentation.
- 69% of EMAS-registered organisations feel that EMAS helps them achieve legal compliance more easily and completely than ISO 14001 alone (80% of them have both EMAS and ISO 14001)

# They chose EMAS

*Without any doubt, the first reason is **communication**. We chose EMAS registration because of the possibility to actively and transparently communicate to the public and to all stakeholders the environmental performance of our plants.*

*Large, multi-site company in Italy*

*We see it [EMAS] as the **GOLD standard in best environmental practice**. Our goal was to **demonstrate a leadership position in our industry** – EMAS supports this objective. It's transparent and requires specific measurable objectives that actually make a real difference.*

*Small printing company in the UK*

*Certifications drive the organisation towards more structured management with pre-determined prerequisites, **which benefit the internal organisation of the company**. This is the **first reason**. Second is the **external visibility for commercial purposes**, as such prerequisites are requested by clients.*

*Small waste sector company in Italy*

*We decided to adopt EMAS because we were already ISO 14001-certified and we realised that, **with EMAS, we could achieve further advantages in terms of compliance with energy management regulations and with the auditing process**.*

*Large manufacturing company in Germany*

Transparent communication, visibility, reputation, credibility and legitimacy emerge as the top priorities underlining EMAS registration.



# EMAS' premium services: Sectoral Reference Documents

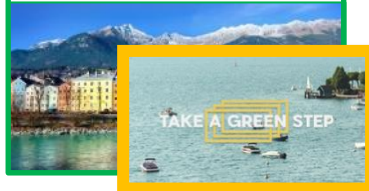
## Retail trade



## Food and beverage manufacturing



## Tourism



## Agriculture



## Construction



## Public administration



## Electrical and electronic Equipment Manufacturing



## Car manufacturing



## Telecommunication and ICT services



## Fabricated metal products Manufacturing



## Waste management



- ✓ Sectoral Reference Documents are available to enable organisations to identify best environmental management practices before deciding on their action plan.
- ✓ These documents include sector-specific performance indicators.
- ✓ They provide benchmarks of excellence for organisations.

# New !



European  
Commission

## EMAS premium services: Tools to implement EMAS

1. Reference data		Date: 24.07.2017 Revision: 2	
Organisation:	Super Cars		
Site:	Waldstr. 100, Berlin		
Country/EU Member State:	DE		
Person responsible for data collection:	Felix Meyer		

Put your data in the cells below. Red cells are filled automatically.

2016 is an example - please choose your own baseline.

Production/Service data for the year			2016
Main products/services, produced/performed in this year	number of items	% share with respect to turnover	Weight per item (in case of products) [t]
Product 1/ Service type 1	Car sales	1000	20
Product 2 / Service type 2	Maintenance		
Product 3/ Service type 3	Office work		
Product 4/ Service type 4	Washing of cars		
Product 5/ Service type 5			
<b>In total</b>		1000	20

Production/Service data for the year			2017
Main products/services, produced/performed in this year	number of items	% share with respect to turnover	Weight per item (in case of products) [t]
Product 1/ Service type 1	Car sales		
Product 2 / Service type 2	Maintenance		
Product 3/ Service type 3	Office work		
Product 4/ Service type 4	Washing of cars		
Product 5/ Service type 5			
<b>In total</b>			

Practical tools are available to help organisations implement EMAS:

- **4 tools** in Excel format:
  - ✓ Tool 1 summarises the organisation's key activities
  - ✓ Tool 2 is used to identify its environmental aspects and impacts
  - ✓ Tool 3 structures responsibilities
  - ✓ Tool 4 calculates key indicators and monitors progress
- **1 Instruction manual**
  - ✓ Highlights where the tools fit into the implementation of EMAS



# EMAS premium services: EMAS logo... and communication!



Quality mark:  
Can only be  
used by  
registered  
organisations



TAKE A TOUR AND DISCOVER  
**EMAS PERFORMERS' ACHIEVEMENTS**  
#EMASPerformers

Select your sector

Sector  
**Manufacturing**

Best Practices

RICOH camax ecoprint CUSTAVSBERG Haslinger



## TOP PERFORMERS HONOURED

[http://ec.europa.eu/environment/emas/emasperformers\\_en.htm#\\_Manufacturing](http://ec.europa.eu/environment/emas/emasperformers_en.htm#_Manufacturing)



European  
Commission

# Top performers that you might encounter in everyday life

**PALAU DE LA MÚSICA ORFEO CATALÀ**

IN HARMONY WITH **EMAS**

**ANDECHSER NATUR**

ENJOY YOUR BREAKFAST WITH **EMAS**

EMAS VERIFIED ENVIRONMENTAL MANAGEMENT

European Commission | #CircularEconomy

**EMAS & EU Ecolabel**  
Page aimée · 5 septembre 2017 · €

Andechser Natur was the 1st company to introduce three-component cups, leading to optimal recycling with 50% less plastic used for each cup!

Recycling made easy with EMAS  
<http://bit.ly/2jw05uX> – avec Andechser Natur.

J'aime Commenter Partager

Marcel van Meesche et 543 autres personnes

6 partages

Voire commentaire...



European  
Commission

#CircularEconomy

**SCHÖNAN BEER**

A FRIENDLY DRINK WITH **EMAS**

EMAS VERIFIED ENVIRONMENTAL MANAGEMENT

European Commission | #CircularEconomy

**EMAS & EU Ecolabel**  
Page aimée · 2 Janvier · €

Fancy a beer? Schönan Brewery recycles waste and most of its organic waste in regional agriculture. Discover other EMAS Performers at <http://bit.ly/2jw05uX> – avec Stiftbrauerei Schönan.

J'aime Commenter Partager

10

2 partages

Voire commentaire...

**VAUDE**

VENTURE OUTDOORS WITH **EMAS**

EMAS VERIFIED ENVIRONMENTAL MANAGEMENT

European Commission | #CircularEconomy

**EMAS & EU Ecolabel**  
Page aimée · 4 avril 2017 · Modifie · €

Vaude is a leader in circular economy and sustainable manufacturing: all products are created with the aim of being repaired, reused and recycled. Discover other EMAS Performers at <http://bit.ly/1Nv4Y3r> – avec VAUDE.

J'aime Commenter Partager

Marcel van Meesche et 144 autres personnes

23 partages

Voire commentaire...



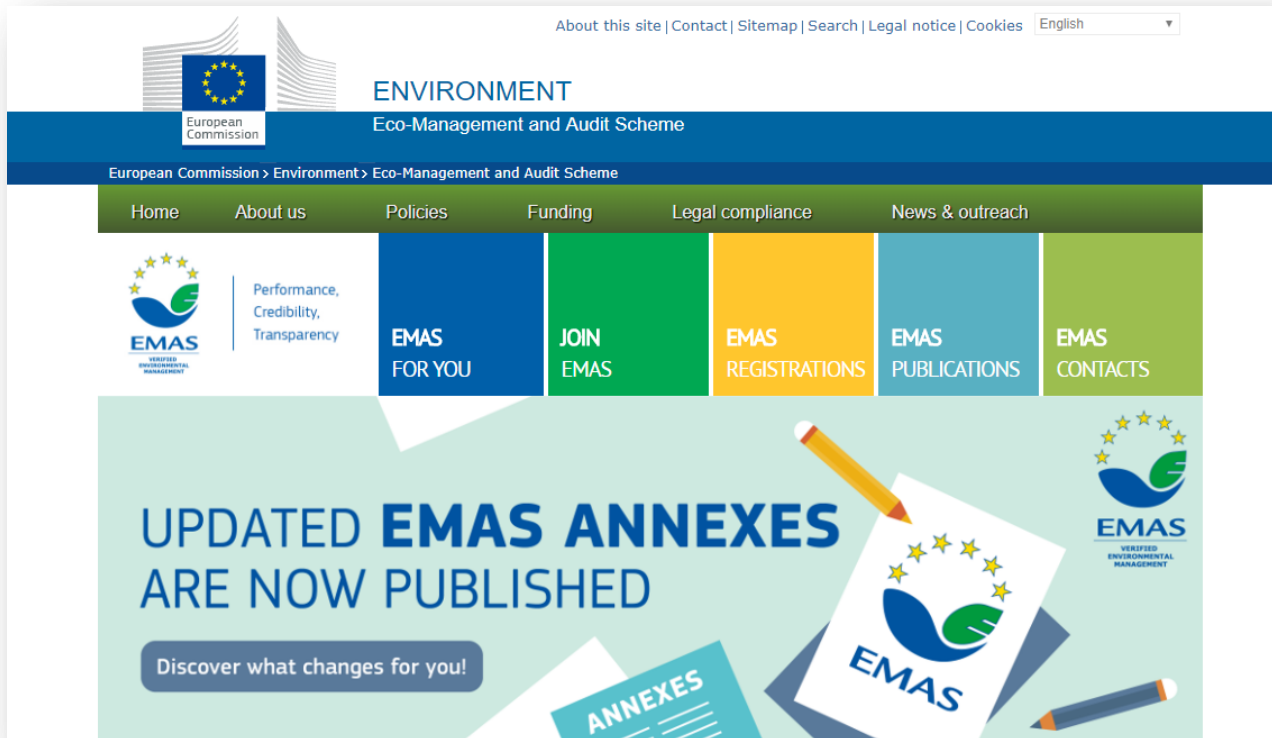
European  
Commission

# EMAS premium services: Guidance, fact sheets, Helpdesk, awards...



[http://ec.europa.eu/environment/emas/emas\\_publications](http://ec.europa.eu/environment/emas/emas_publications)

# A wealth of information on the official EMAS website



The screenshot shows the official EMAS website. At the top, there is a navigation bar with links for "About this site", "Contact", "Sitemap", "Search", "Legal notice", "Cookies", and a language dropdown set to "English". Below this is the "ENVIRONMENT" header with the sub-header "Eco-Management and Audit Scheme". A breadcrumb trail reads "European Commission > Environment > Eco-Management and Audit Scheme". A horizontal menu contains "Home", "About us", "Policies", "Funding", "Legal compliance", and "News & outreach". The main content area features the EMAS logo with the tagline "Performance, Credibility, Transparency" and five colored buttons: "EMAS FOR YOU" (dark blue), "JOIN EMAS" (green), "EMAS REGISTRATIONS" (yellow), "EMAS PUBLICATIONS" (light blue), and "EMAS CONTACTS" (light green). A large banner below the menu announces "UPDATED EMAS ANNEXES ARE NOW PUBLISHED" with a "Discover what changes for you!" button. The banner includes illustrations of documents, a pencil, and the EMAS logo.

[www.ec.europa.eu/environment/emas](http://www.ec.europa.eu/environment/emas)

# EMAS statistics

Almost 4,000 organisations and 10,000 sites are EMAS-registered\*.



[www.emas-register.eu](http://www.emas-register.eu)



## Why not you?

Feel free to contact your national Competent Body with any questions you may have:

[http://ec.europa.eu/environment/emas/emas\\_contacts/competent\\_bodies\\_en.htm](http://ec.europa.eu/environment/emas/emas_contacts/competent_bodies_en.htm)

Or contact the EMAS Helpdesk:

Email: [emashelpdesk@adelphi.de](mailto:emashelpdesk@adelphi.de)

*Tel: +49 (30) 89 000 68 - 285*

*Fax: +49 (30) 89 000 68 – 10*

The Helpdesk is operated by adelphi in cooperation with EMAS Club Catalonia, the Environment Agency Austria and 21 Solutions on behalf of the European Commission, Environment DG

EMAS Website: [ec.europa.eu/environment/emas](http://ec.europa.eu/environment/emas)