

**FEST/SPIEL/HAUS/  
ST/POELTEN/**

**BIH** BÜHNE  
IM HOF

# SUSTAINABILITY IN THE TOURISM SECTOR

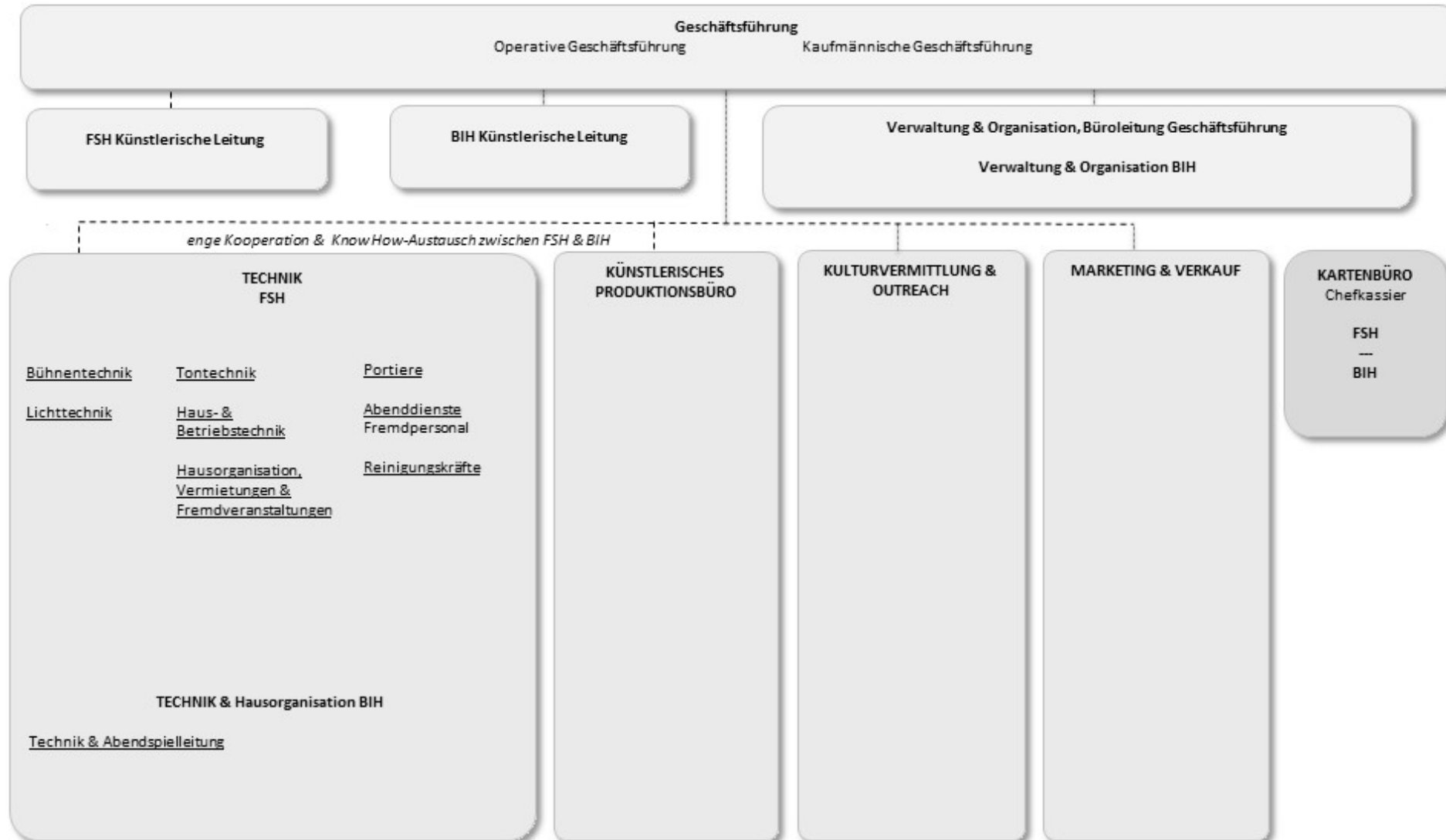


# NÖKU Holding

- 15 affiliated companies
  - Approx. 40 different artistic and scientific venues (museums, theatres...) in Lower Austria
- Content governance
- Financial governance
- Facility provider (IT, HR, accounting, car pool etc...)
- Connecting culture/science and economic thinking
- Overall guidelines for sustainability



# Niederösterreichische Kulturszene Betriebs GmbH







# Bühne im Hof

- Founded 1990 in a building from the 14th century
- Expansion and modernization 1993
- 500 seats
- Music, Cabaret, Literature
- Focus on national artists
- Approx. 100 events/year







# Festspielhaus St. Pölten

- Opening 1997
- Modern architecture (Klaus Kada)
- Main hall – 1.000 seats
- Chamber music hall – 200 seats
- Dance, Concerts (classical and modern), Circus
- Focus on international artists
- 150-200 events/year

# Sustainability measures

- Certified catering
- Close monitoring of waste disposal – recycling system
- Use of green cleaning products
- Paper-free office
- Use of certified paper
- Monitoring efficiency of printed promotional material
- LED technology
- Educational measures



# Mobility

## STAFF

- Commute
- Business trips

## AUDIENCE

## ARTISTS

- Artists' travel
- Set transport
- Green touring

## Achievements

- Reduction of diesel consumption by two thirds
- Almost balance between air and rail kilometres
- Reduction of CO<sub>2</sub> emissions by 13,5%
- Eco-management award for best EMAS declaration

## Goals

- New caterer – certification
- Audience survey
- Improvement waste disposal system Buehne im Hof
- Green clause in artists' contracts

**FEST/SPIEL/HAUS/  
ST/POELTEN/**

[www.festspielhaus.at](http://www.festspielhaus.at)

**BIH** BÜHNE  
IM HOF

[www.buehneimhof.at](http://www.buehneimhof.at)

**NÖKU** 

[www.noeku.at](http://www.noeku.at)