

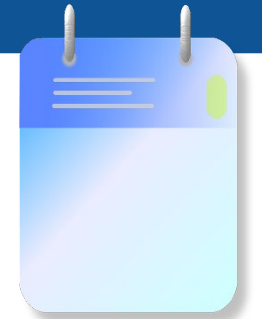


Emission Reduction Strategies for Professional Travels



*Description of measures to reduce
emissions and analysis of staff
behaviour*

*Tuesday 28/11
2-3 pm online*



AGENDA

- *Welcome and introduction of the topic*
- *Reducing emissions from professional travels: Laure Ledoux (EC)*
- *Understanding our travel emissions to inform action: APA Alessandro and MUSUMECI Gaetana (EIB)*
- *Q&A session*
- *Conclusions*

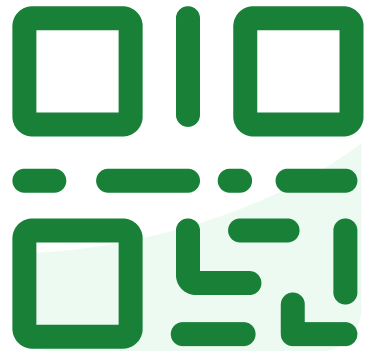


Join the poll in Slido!

Do you have any emissions' reduction measure related to travels at your Institution?

**Join at slido.com
#EMASdays2023**

slido



**Join at slido.com
#2520958**

ⓘ Start presenting to display the joining instructions on this slide.

slido



**Do you have any emissions'
reduction measure related to travels
at your Institution?**

① Start presenting to display the poll results on this slide.

Reducing emissions from professional travels



Laure Ledoux, Head of Unit HR.D.7: Greening, Safety & Buildings

Buildings & Work space

Use more efficient, sustainable, climate-resilient buildings & working space

Greener buildings

Improve the energy efficiency of our buildings; cover emissions linked to construction of buildings, IT equipment, purchased goods/services/own waste.

Conduct vulnerability and risk assessment; promote preventive measures.

Greener working place

Reduction of overall office surface; coherence with the new working time decision.

Factor in environmental impact of telework.

Behavioural change: waste reduction, re-use and recycle material.

Greener mobility

Green our mobility whilst reaching out to citizens

Setting the example for missions & greener travels

Promote videoconferencing as the default option.

Optimise the organisation of missions.

Decrease the environmental impact of travel.

Mix in-person/virtual experts' meetings.

Greener commuting

Boost the use of sustainable modes of transport: mobility plan; develop infrastructure; awareness raising campaigns.

Gradual transition to zero emission Commission vehicles by 2027.

Digitalisation

Supporting us in the transition

Optimise IT operations and assets

Develop digital solutions as an enabler of savings from other emission sources (buildings, mobility) and limit their environmental impact/ energy consumption.

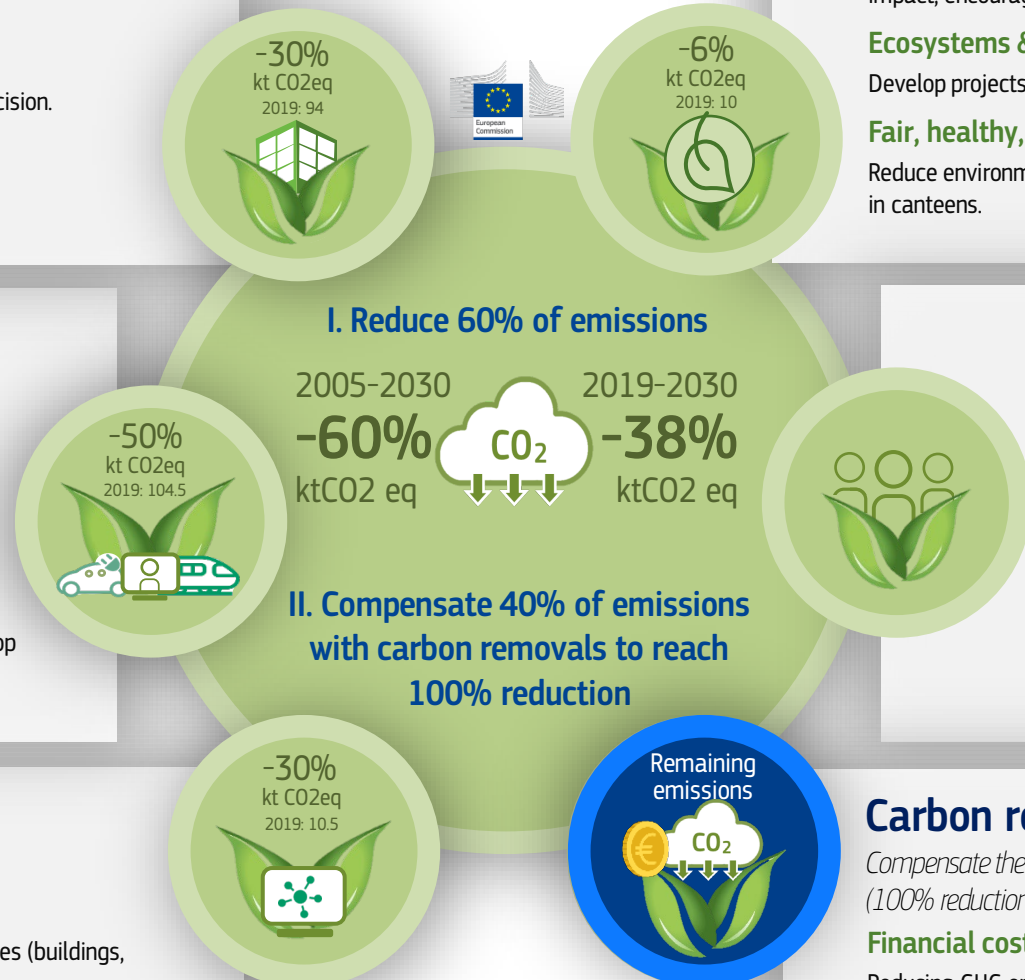
Limit environmental impact of data centres; reduce the number of local ones.

More energy efficient devices.

Ensure coherence with the internal digital strategy.

Greener digital behaviours such as online collaboration tools.

How can we reach climate neutrality by 2030?



Green Deal

Ensure coherence with other policies of the Green Deal

Circular economy

Enhance use of green public procurement; prioritise low life-cycle environmental and social impact; encourage operators to green their offers.

Ecosystems & Biodiversity

Develop projects on urban and non-urban sites; better integration into society.

Fair, healthy, sustainable and good food (from Farm to fork)

Reduce environmental impact of catering; favouring short-circuits, and use of food labels in canteens.

Pro-active engagement

Staff as an enabler to reach climate neutrality

Staff participation as pioneers

of the transition towards climate neutrality: adhesion of the Commission to Climate Pact; participation in campaigns; adapt to new ways of working; volunteer as green ambassador.

Implement the sustainability, aesthetics and inclusion objectives of the new European Bauhaus in the Commission.

Communication

Raise awareness among EU citizens showing the benefit of moving to carbon neutrality; exchange of good practices with other institutions.

Carbon removals

Compensate the remaining emissions with carbon removal to reach carbon neutrality (100% reduction)

Financial cost of carbon removals

Reducing GHG emission reductions should be done whenever possible.

Await the Commission proposal on carbon removal certification to ensure adequate and efficient carbon removals from the atmosphere.

Assess the opportunity for a pilot project in 2024

European
Green Deal
Greening the Commission

Greening the Commission: pledge to reduce travel emissions

Staff and experts' travels emissions reduction **by 50%** 2019-2024:

- increased usage of **digital solutions**
- **blended way** of organising meetings or events
- prioritized **greener modes** of transport



*Reduce business travels'
emissions and use more
sustainable modes of
transport*

Guide to Missions review

Where are we?

- *ISC completed*
- *Social dialogue ongoing*
- *Foreseen adoption: **Q1 2024***



New elements on Greening and Ethics, as well as a general update and simplification

Staff travel



Smart organisation

- Business travels well justified
- Blended way of meetings
- Less essential meetings organised remotely
- Limit number of staff travelling
- Optimise missions

Smart travelling

- Trains should be used for distances up to 500 km (**550 km**)
- Financial cost: favour the greener alternative (**+40%**)
- Duration of journey including checks, boarding and transfers
- Air travels well justified and direct flight preferred
- Travel by road by zero-or low-emission vehicle
- Promote shuttles

Monitoring

- Monitor GHG emissions through an IT tool (MiPS)

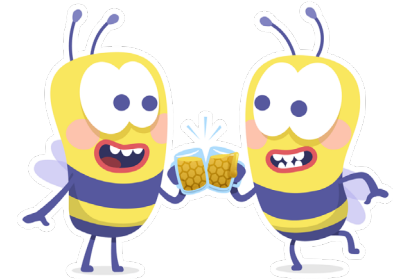


Reduce business travels' emissions and use more sustainable modes of transport



Smart organisation

- Criteria for choosing in-person meetings
 - Sensitive agenda
 - Sensitive act
 - More conducive to bringing about an agreement
 - **On discussion of draft acts**, a physical meeting is more effective
 - **More beneficial for a group**
 - MS asking for a physical meeting
- In-person meetings of comitology committees: hybrid format by default.



Smart travelling

- Same principles as for staff travel apply

Monitoring

- Emissions estimated ex-post

Where do we stand now?



Some draft figures:*

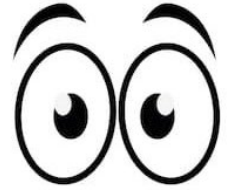
*In **2022** we reduced the CO₂ emissions from staff travels by **42%** compared to 2019*

*And we reduced by **61%** the emissions from experts' travels (2022 compared to 2019)*

Still 2022 was a peculiar year...

**data not yet approved by verifier*

Some additional food-for-thoughts:



- *90% emissions from air travel*
- *Difference between travelling **business** or **economy** class*
- *Additional warming impacts considered*
- *Internal carbon levy/tax on staffs' travel*



Thank you!



Greening the Commission on MY IC:

[Greening the Commission - EMAS \(europa.eu\)](https://europa.eu)

Greening the Commission pledges on MY IC:

[Greening the Commission: pledge to reduce travel emissions \(europa.eu\)](https://europa.eu)

EMAS in EC: EC-EMAS@ec.europa.eu